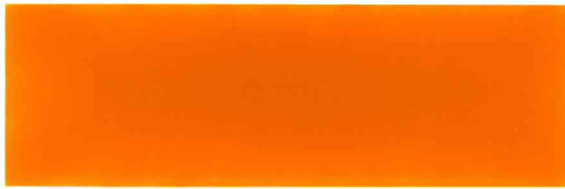


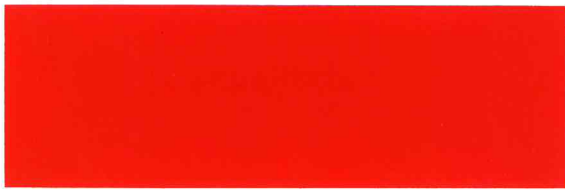
# Transocean

## Standard colour shades

The colours in this brochure are representations rather than exact matches to the colours of the specific products. The appearance of any colour of any product will depend on the gloss level and composition of the selected product. Slight differences therefore may occur from coating to coating for the same colour shade. Additional shades and special custom colours can be made available. Consult your nearest Transocean representative for specific information.



TO 63 Orange / RAL 2000



TO 62 Rescue Orange

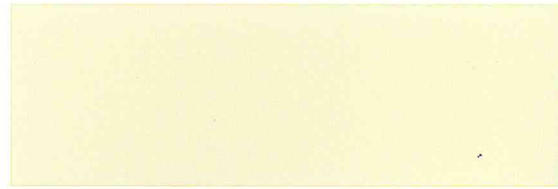


TO 64 Signal Red / RAL 3000



TO 66 Redbrown

TO 00 White



TO 07 Pearl / RAL 1013



TO 20 Sand Yellow



TO 21 Light Mast



TO 22 Middle Mast



TO 12 Signal Yellow / RAL 1021

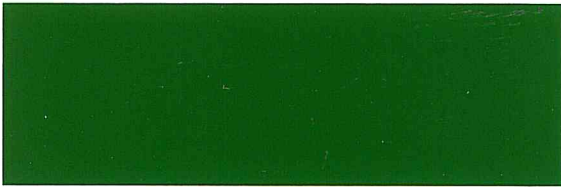
Since 1959, Transocean Coatings is active in the manufacture and supply of coatings for commercial ships and steel structures onshore as well as offshore. Extensive research and development work has provided Transocean Coatings with a series of products which professionals acknowledge to be complete and of high quality. Transocean Coatings has a network of manufacturers, producing its range of coatings and subsequently distributing the paints to all continents. Manufacturing takes place using stringent formulations. Whether a product is supplied in Europe, Asia, America, Africa or Australia, the quality is guaranteed identical. At any shore therefore, wherever in the world, you can rely on Transocean Coatings.



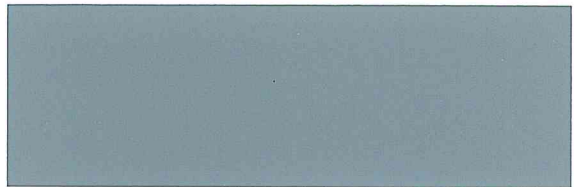
TO 31 Seagreen / RAL 6019



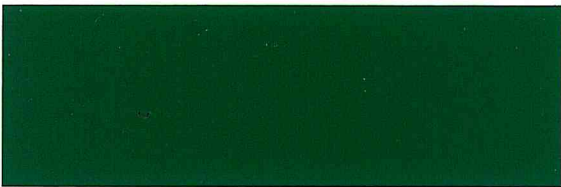
TO 53 Light Grey / RAL 7035



TO 38 Green / RAL 6002



TO 56 Silver Grey / RAL 7001



TO 39 Dark Green



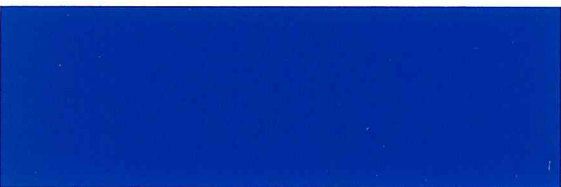
TO 57 Blue Grey



TO 44 Sky Blue / RAL 5015



TO 59 Dark Grey / RAL 7012



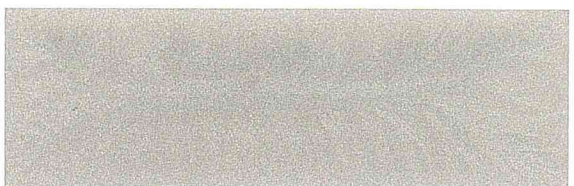
TO 46 Signal Blue / RAL 5010



TO 99 Black / RAL 9005



TO 48 Ultramarine Blue



TO 90 Silver